


Why Migrate from JD Edwards World to EnterpriseOne 9.2





Choice and Control

JD Edwards World software customers have **choices**.

As your organization plans your software future, you can choose to:

- Migrate to EnterpriseOne 9.2
- Move to Oracle Cloud ERP
- Upgrade to World A9.4
- Keep using World on your current release and defined support model

Migrating to EnterpriseOne 9.2 is a strategic choice. You have the option to run JD Edwards EnterpriseOne in the cloud or stay on-premises, plus you have the option to change your hardware platform.

JD Edwards EnterpriseOne 9.2 enables your organization to become a digital business.

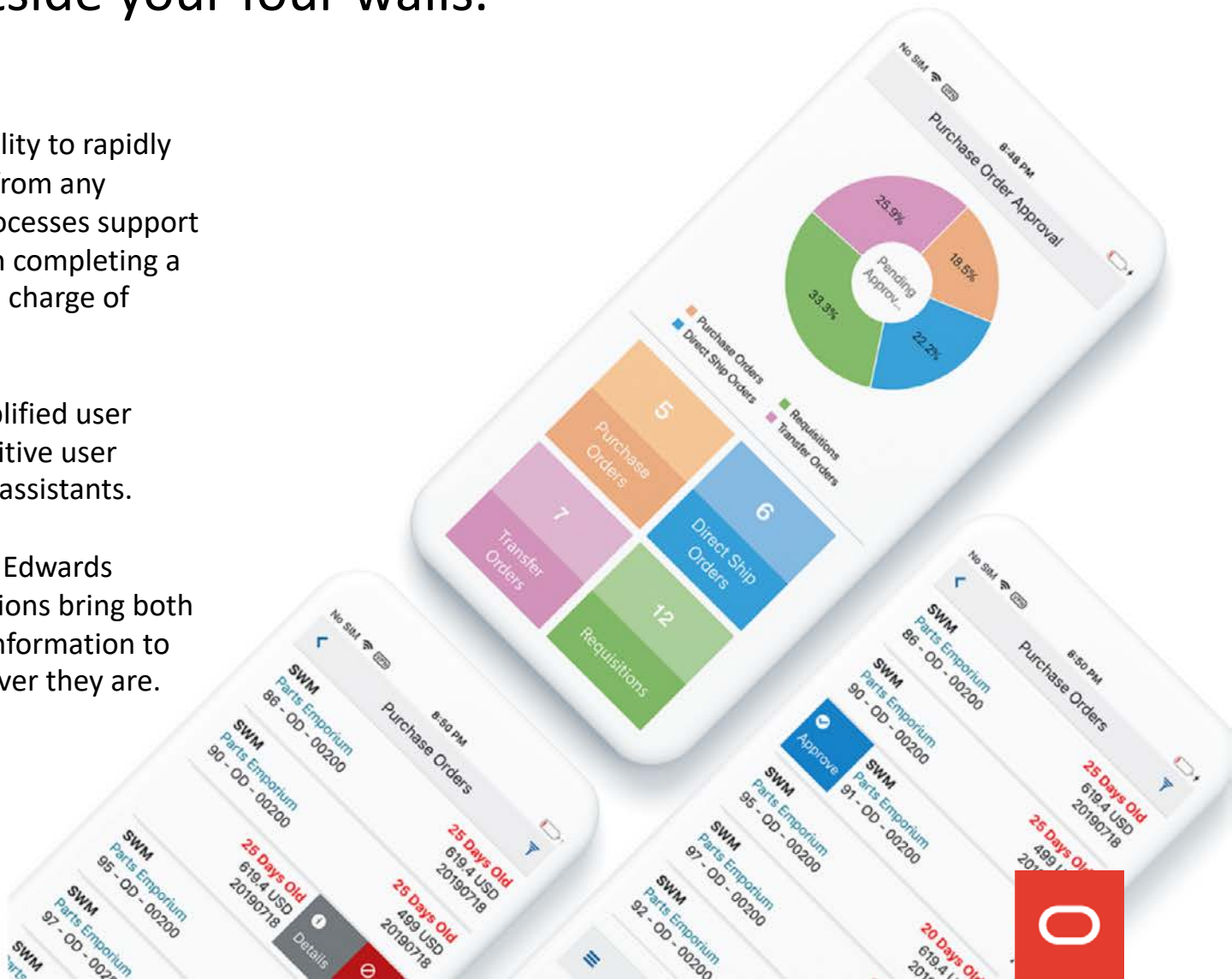


Connected outside your four walls.

Your teams need the flexibility to rapidly execute time-critical tasks from any location, whether these processes support an onsite service technician completing a work order or a manager in charge of approving purchase orders.

Mobile devices offer a simplified user interaction through an intuitive user interface and use of digital assistants.

Mobile applications and JD Edwards EnterpriseOne 9.2 notifications bring both JD Edwards solutions and information to your business users, wherever they are.



Automate your business processes.

Manual data entry is tedious, expensive, and prone to problems. Inaccurate and inconsistent data entry often results in information gaps. Delivering real-time data into EnterpriseOne applications leads to optimized operations, more accurate analytics, and better regulatory compliance.

JD Edwards applications are uniquely positioned to leverage the capabilities of new data sources including sensors, devices, and machine-to-machine, as well as automating processes with 3rd party applications. Automation reduces manual tasks and enables users to focus on more critical and more creative tasks, increasing employee satisfaction.

EnterpriseOne 9.2 automation capabilities transform how you use your entire JD Edwards system, placing you on the path to a digital business.



Role-Based User Interface

User experience that enables digital decisions.

JD Edwards EnterpriseOne 9.2 delivers role-based solutions across the broad portfolio of products.

This user experience centers on the design principles of:

- Alert – what I need to know
- Analyze – understanding my business
- Act – easily act on the information

These principles provide a digital representation of your business data enabling users to work the way they need with greater efficiency and better decision-making capability.

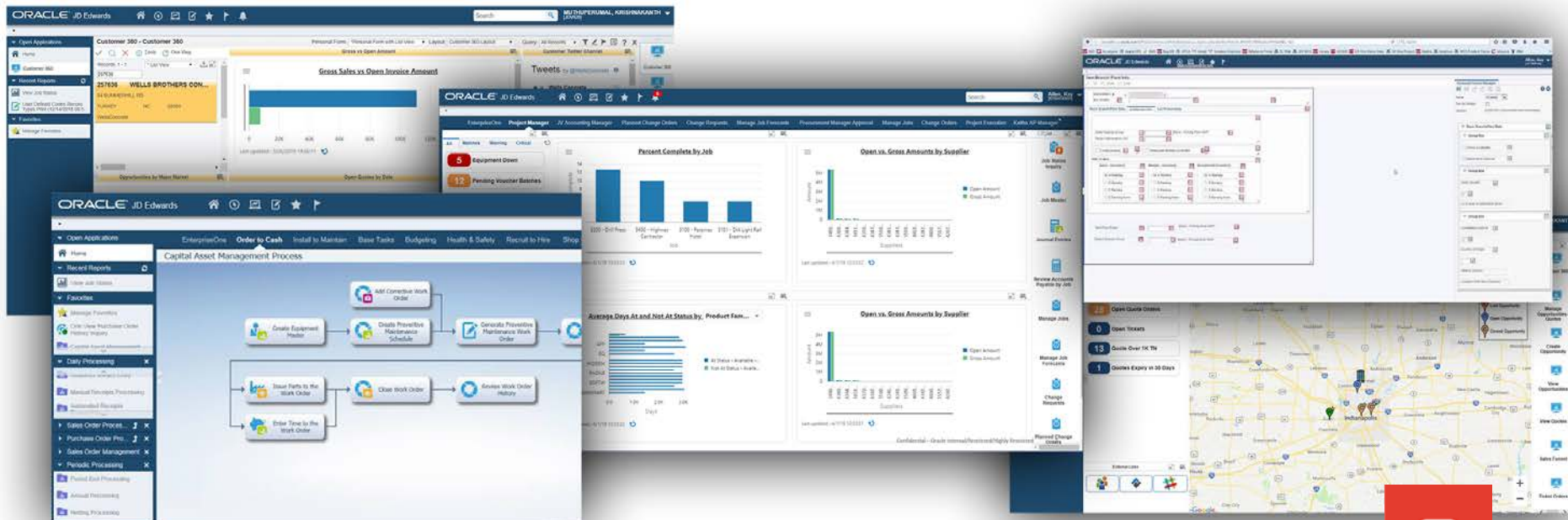


Reduce or Eliminate Customizations

Personalize your experience.

JD Edwards EnterpriseOne 9.2 architecture significantly reduces the need to customize. Changes to your enterprise applications are reduced or eliminated by a personalization framework that enables business analysts to configure the EnterpriseOne user experience.

By personalizing, you reduce the cost and effort of implementing and maintaining your solutions, allowing your IT resources to focus on transforming your business while providing your organization the option to continuously adopt new JD Edwards functionality.

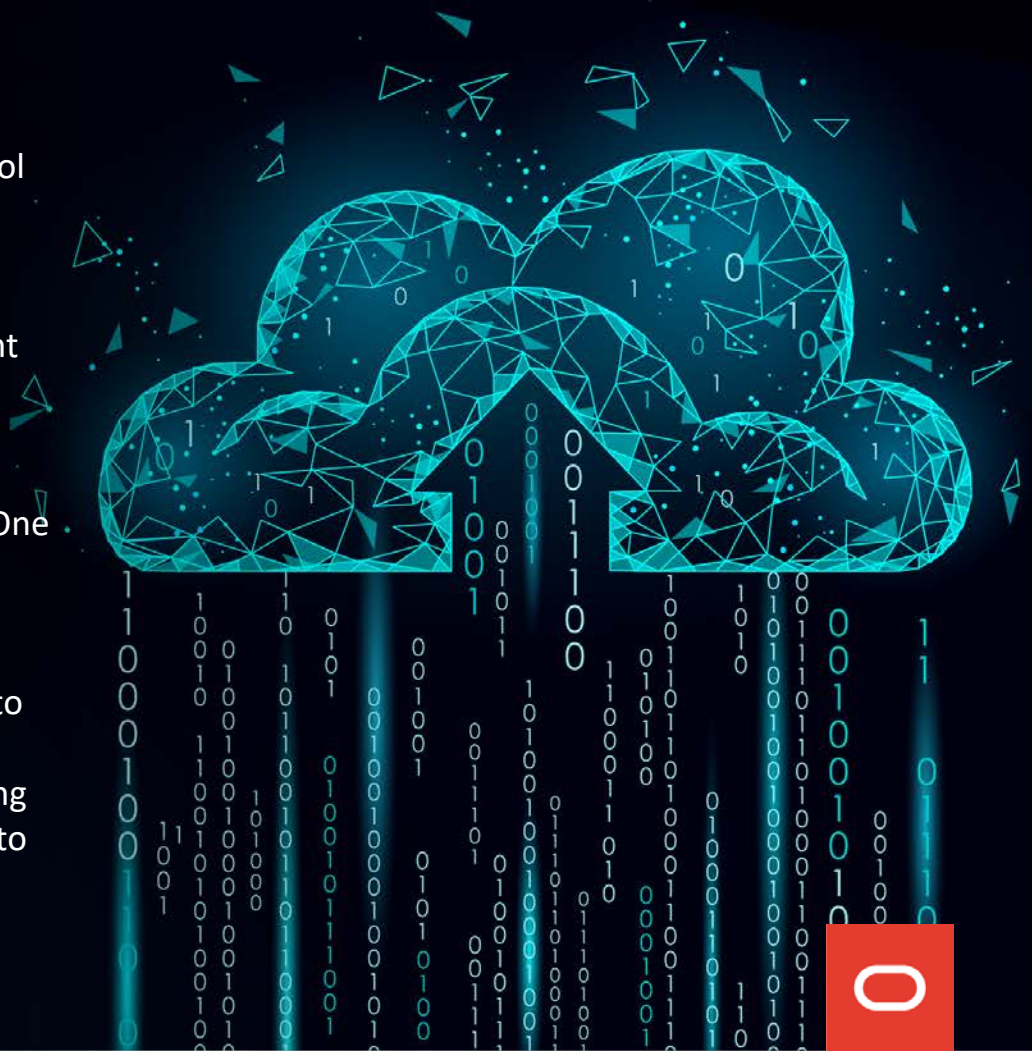


On-premises, hybrid, or public **cloud** strategies.

JD Edwards EnterpriseOne 9.2 cloud strategy empowers you to achieve your target business outcomes through choice of applications and control over operations for both on-premises and hybrid cloud models. You can continue to leverage your JD Edwards investment and have the option of selecting cloud solutions that complement your existing systems.

Your organization can complement your JD Edwards solutions with SaaS, extend EnterpriseOne 9.2 with strategic Oracle solutions via PaaS, and optimize your operations with IaaS.

Cloud enables lines of business to rapidly respond to evolving business conditions to capture market opportunities. Cloud reduces IT constraints, enabling you to implement on your schedule and according to your business drivers.

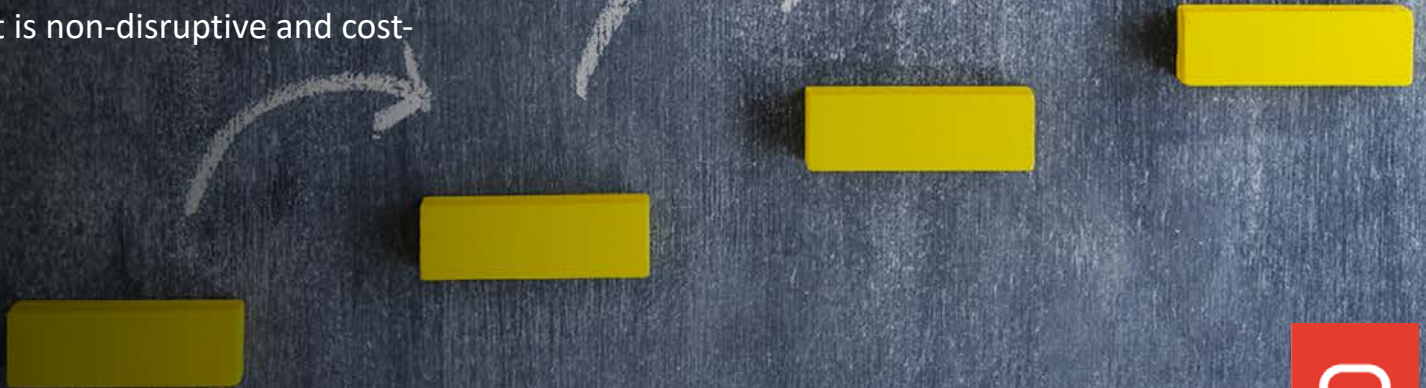


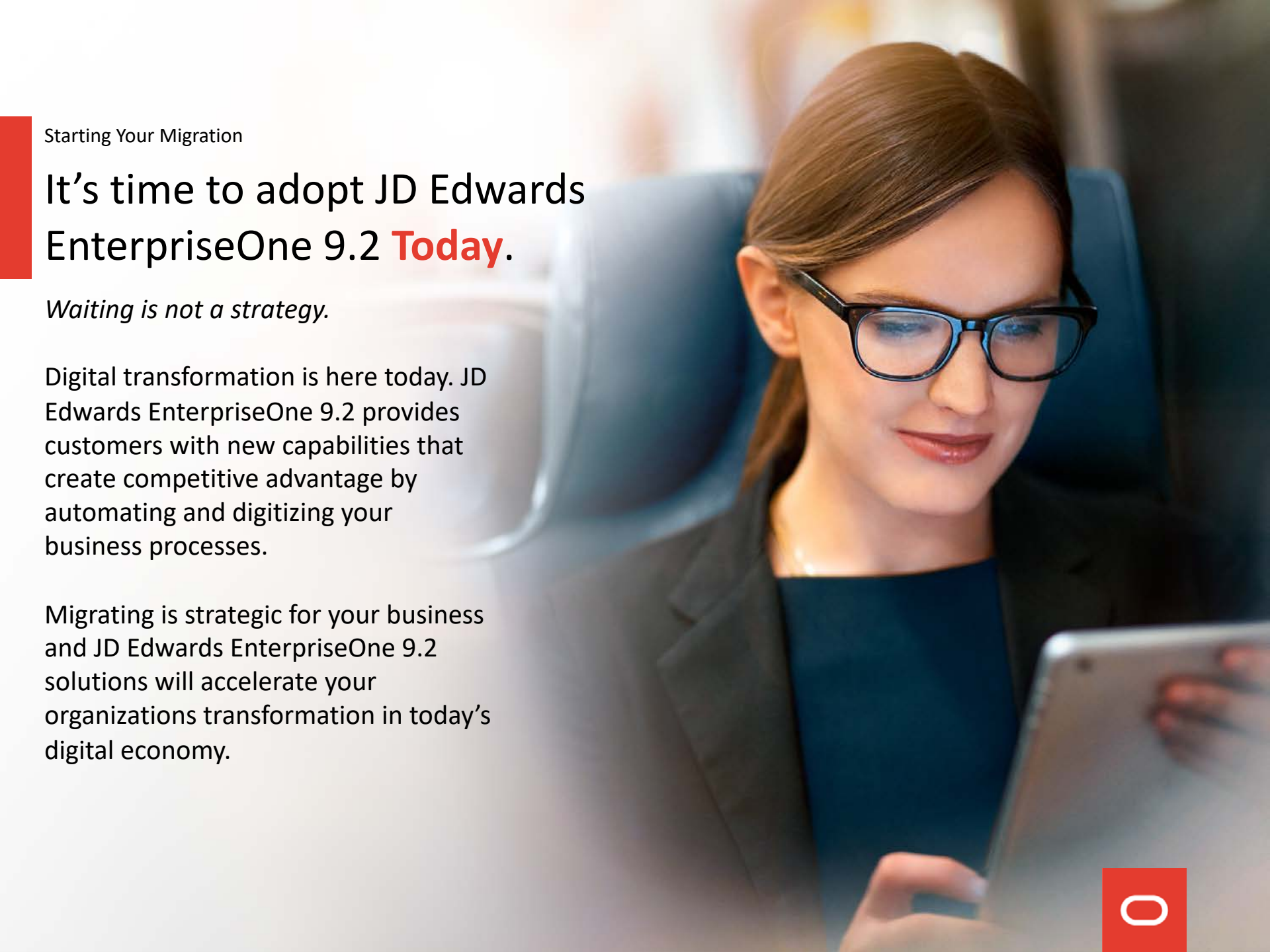
Embrace **continuous** adoption.

Continuous innovation delivers smaller incremental updates and no more extended upgrades. The JD Edwards EnterpriseOne 9.2 continuous development model delivers in a more frequent pattern, enabling your organization to regularly adopt new solutions and to adapt to changes in your industry while remaining competitive.

Instead of thinking in terms of a big bang, think in terms of an iterative method – install it, learn it, use it, and digitize your processes.

Continuous innovation provides room for business growth and improvement of business operations over a variety of your processes through a continuous adoption model that is non-disruptive and cost-effective.



A woman with brown hair and black-rimmed glasses is looking down at a laptop. She is wearing a dark blazer over a dark top. The background is blurred, showing what appears to be an office setting with blue chairs.

Starting Your Migration

It's time to adopt JD Edwards EnterpriseOne 9.2 **Today.**

Waiting is not a strategy.

Digital transformation is here today. JD Edwards EnterpriseOne 9.2 provides customers with new capabilities that create competitive advantage by automating and digitizing your business processes.

Migrating is strategic for your business and JD Edwards EnterpriseOne 9.2 solutions will accelerate your organizations transformation in today's digital economy.



Learn More about Migrating

Connect with JD Edwards.



[OracleJDEdwards](#)



[JD Edwards Professionals](#)



[Oracle JD Edwards](#)



[Oracle JD Edwards](#)



[LearnJDE.com/contact](#)

Copyright © 1994, 2020, Oracle and/or its affiliates.

This document is provided for information purposes only, and the contents hereof are subject to change without notice. This document is not warranted to be error-free, nor subject to any other warranties or conditions, whether expressed orally or implied in law, including implied warranties and conditions of merchantability or fitness for a particular purpose. We specifically disclaim any liability with respect to this document, and no contractual obligations are formed either directly or indirectly by this document. This document may not be reproduced or transmitted in any form or by any means, electronic or mechanical, for any purpose, without our prior written permission.

Oracle and Java are registered trademarks of Oracle and/or its affiliates. Other names may be trademarks of their respective owners.

